

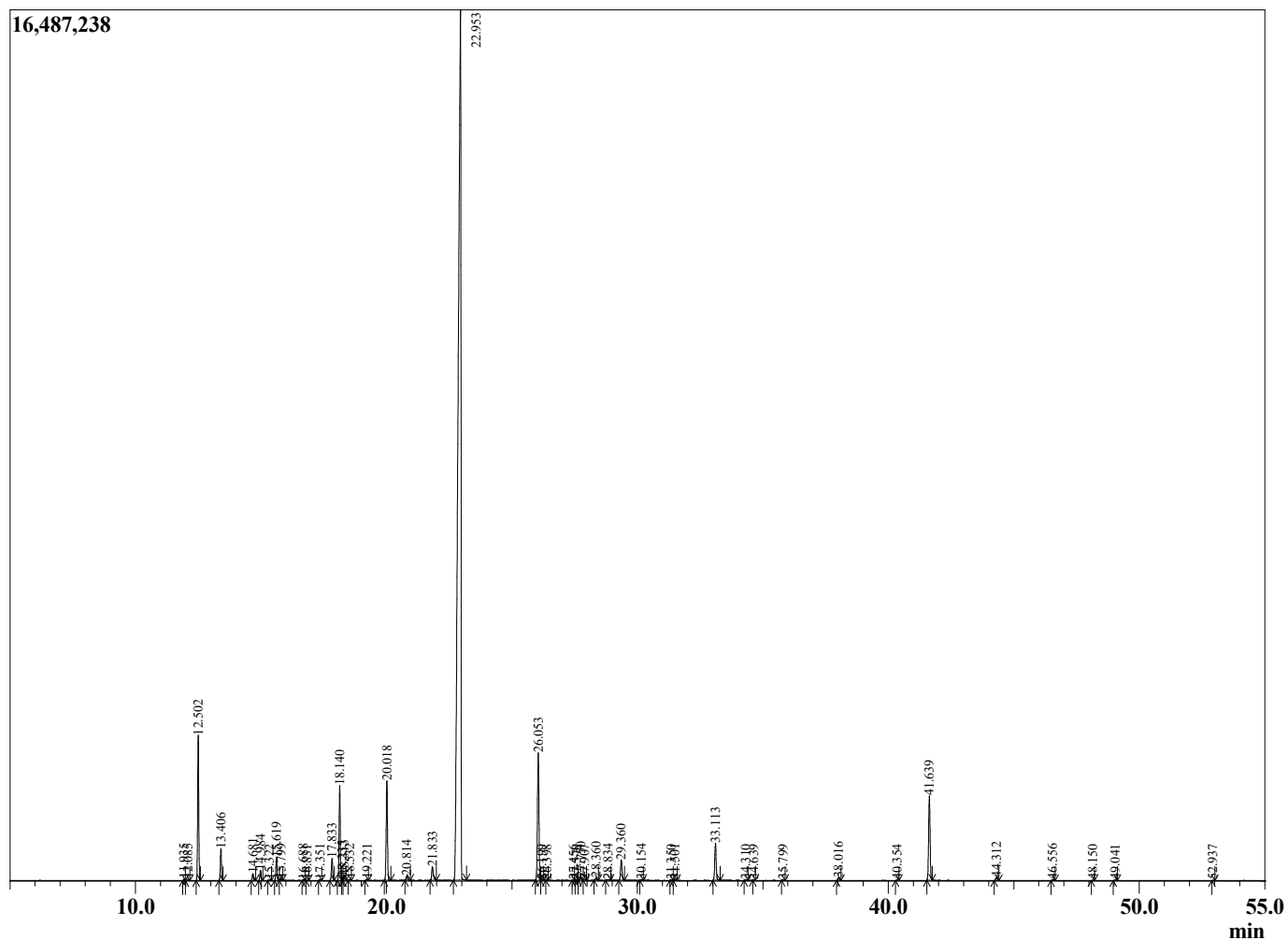
Sample Information

Sample Type : Essential Oil  
 Sample Name : Coriandrum sativum :  
 Injection Volume : 0.10

Coriander USA  
 Lot# USX20-XH  
 Country: USA



Chromatogram Coriandrum sativum



R.Time	Name	Area%
11.935	3-Methyl Apopinene	0.04
12.085	alpha-Thujene	0.03
12.502	alpha-Pinene	4.66
13.406	Camphene	1.03
14.681	Sabinene	0.23
14.984	beta-Pinene	0.35
15.322	6-Methyl hept-5-en-2-one	0.03
15.619	Myrcene	0.81
15.799	6-Hepten-1-ol, 2-methyl-	0.05
16.688	alpha-Phellandrene	0.03
16.831	gamma-Terpinene	0.01
17.351	alpha-Terpinene	0.03
17.833	para-Cymene	0.80
18.140	Limonene	3.25
18.235	beta-Phellandrene	0.10
18.313	1,8-Cineole	0.18
18.532	cis-beta-Ocimene	0.03
19.221	trans-beta-Ocimene	0.04
20.018	gamma-Terpinene	3.72
20.814	trans-Linalool oxide	0.19
21.833	Terpinolene	0.63
22.953	Linalool	71.55
26.053	Camphor	5.38
26.199	Unidentified	0.02
26.398	Unidentified	0.01
27.456	Unidentified	0.01
27.578	Unidentified	0.02
27.750	endo-Borneol	0.10
27.907	Unidentified	0.01
28.360	Terpinen-4-ol	0.11
28.834	Unidentified	0.04
29.360	alpha-Terpineol	0.87
30.154	Unidentified	0.03
31.350	Unidentified	0.02
31.501	Citronellol	0.04
33.113	Geraniol	1.56
34.310	Geranial	0.02
34.639	Unidentified	0.01
35.799	Unidentified	0.01
38.016	Myrtenyl acetate	0.11
40.354	Neryl acetate	0.02
41.639	Geranyl acetate	3.58
44.312	beta-Caryophyllene	0.14
46.556	alpha-Humulene	0.05
48.150	Germacrene D	0.02
49.041	Unidentified	0.03
52.937	Unidentified	0.01
		100.00